

九譽有限公司

*FINE BUBBLE DISC DIFFUSER*

MODEL RSD-225 &330



## SINGLE MEMBRANE DISC DIFFUSER

1.01 :MODEL : RSD

1.02 :QUANTITY : PC

### 2.01 MATERIAL OF DIFFUSER

- A. High quality EPDM membrane
- B. The membrane must close quickly when stop air supply , The self-cleaning design prevents clogging and highly resistant to fouling, The physical characteristic is as follows:

Tensile strength ( 抗張強度 )	2000 PSI
Tear strength ( 撕裂強度 )	110 Lb/linear inch
Ozone resistance ( 臭氧測試 )	Pass
UV resistance ( 紫外線測試 )	Pass
Durometer	60
Ultimate elongation ( 拉伸率 )	700%

- C. The disc base and retaining ring shall be molded high quality ABS( POLYLAC) .

The physical characteristic is as follows::

Specific Gravity ( 比重 )	1.06
IZOD Impact Strength ( 衝擊強度 )	2.6 ft-lb/in
Tensile Strength ( 引張強度 )	7090 PSI
Tensile Elongation ( 延伸率 )	15%
Maximum Temperature ( 最高操作溫度 )	85°C

- D. Connection to the air header : 3/4" NPT threads

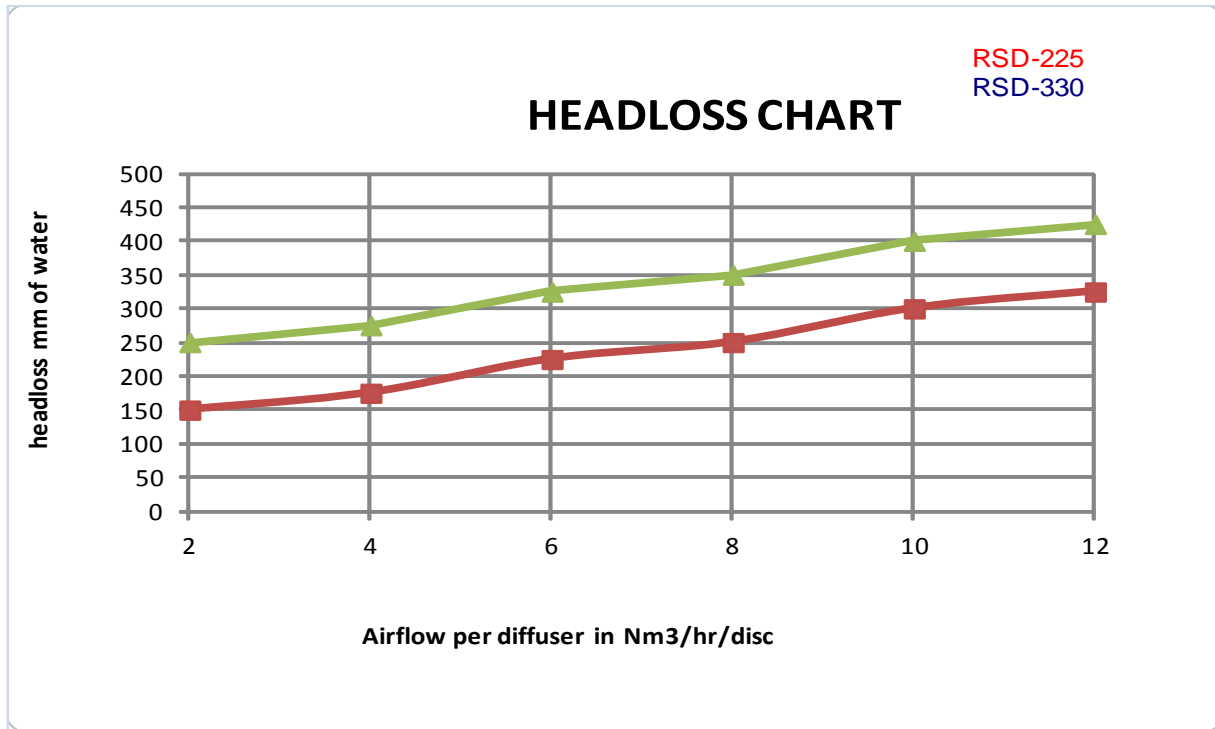
### 2.02 Features:

- Low operating costs  
Reduced energy consumption when we operated the membrane diffuser brings considerable cost savings
- Constant back valve  
The self-cleaning design prevents clogging and highly resistant to fouling
- High oxygen transfer rate  
Equally distributed micro pores on the diffuser membrane. Consistently produce 1-3 mm fine air bubbles that increase the surface contact area with water, greatly increasing the oxygen transfer efficiency.
- Simple installation procedures  
Diffuser range to be installed on most existing air header systems without special tools required.
- Extended lifetime expectancy

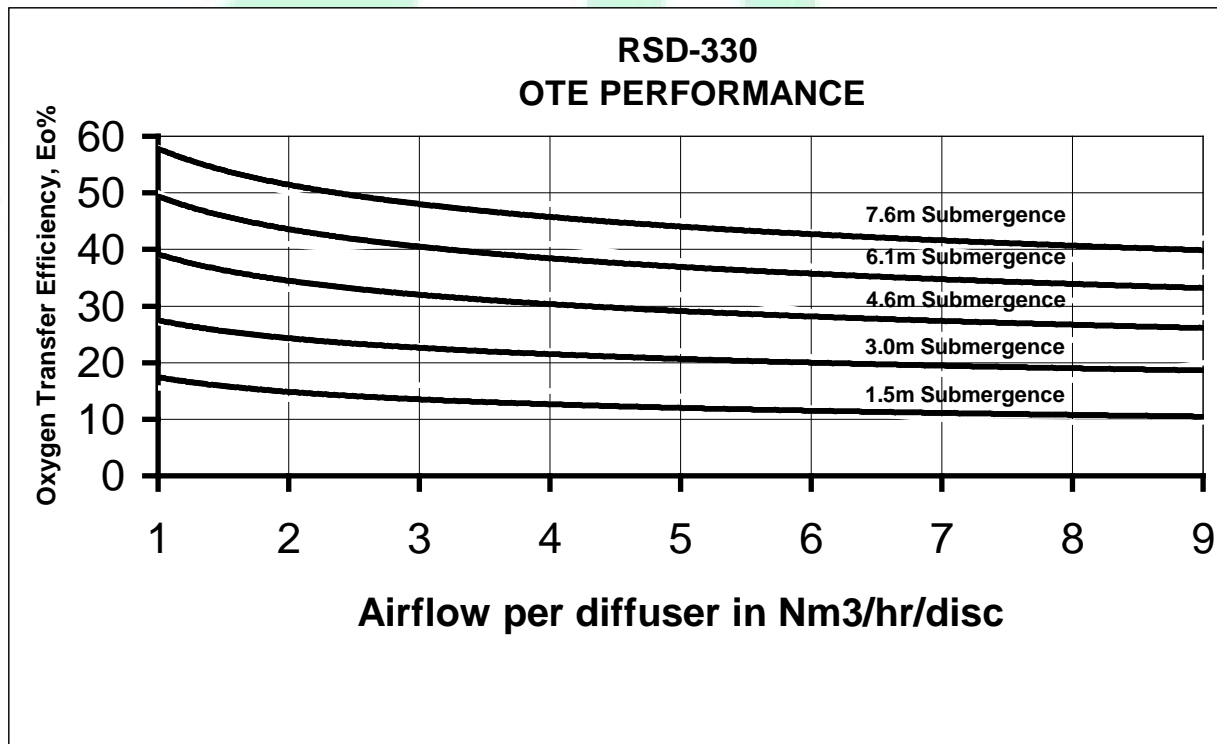
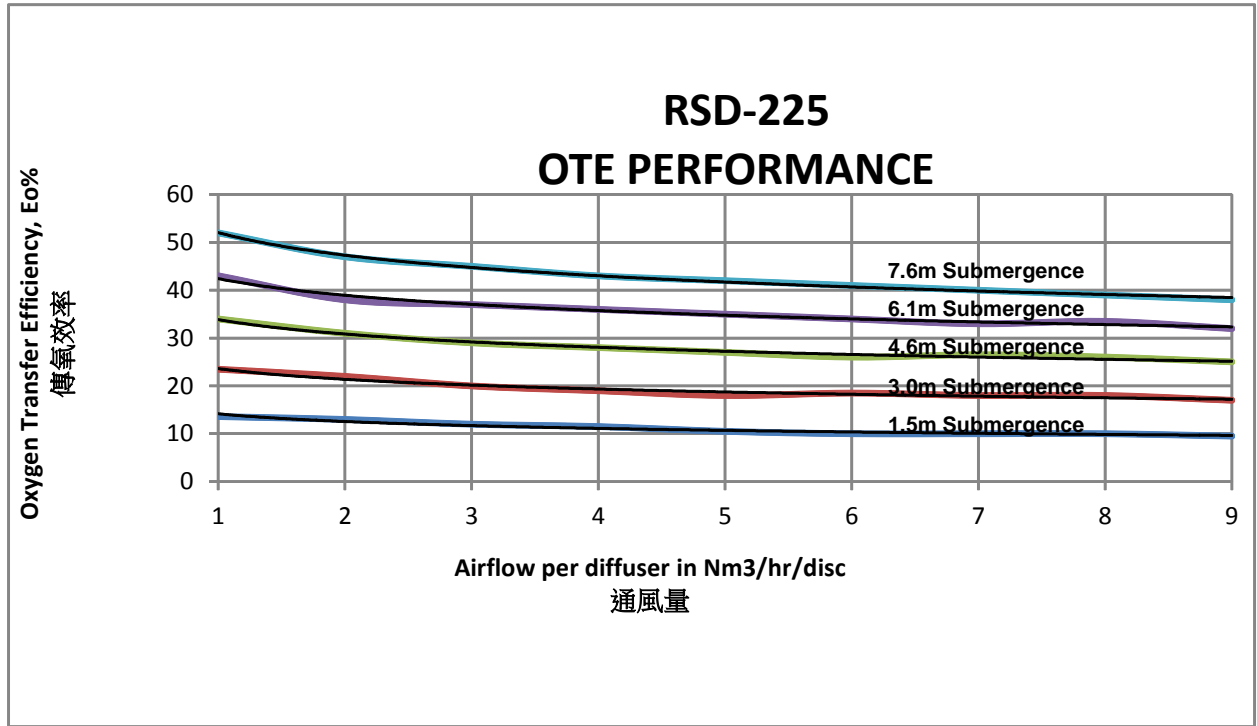
EPDM membrane maintains elasticity and is resistant to even the most aggressive wastewater components

- Reliable intermittent aeration operation  
An integral check-valve system makes the diffuser ideally suited for air-on/air-off operations such as SBR's.

F. HEADLOSS CURVE 壓損曲線



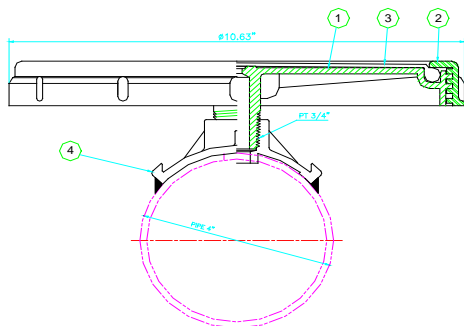
G. OTE EFFICIENCY CURVE 傳氧效率



## H. SPECIFICATIONS 規格表

MODEL	RSD-225	RSD-330
MATERIAL OF MEMBRANE	EPDM	EPDM
DISC BASE	ABS	ABS
DIA. OF DISC (MM)	225 (7")	330 (12")
AIR FLOW (NM <sup>3</sup> /H)	1.0-9.0	1.0-12.0
BUBBLE SIZE (MM)	1-3	1-3
FLOOR COVERAGE (%)	2-25	2-25
WEIGHT (kg)	0.4	0.85
OPERATING TEMP (°C)	85	85
CONNECTION (MM) PT	20 (3/4")	20 (3/4")

## I. CONSTRUCTION OF DISC DIFFUSER



## ACCESSORIES 附件

**80MM QC SADDLE 鞍座**



**32MM PVC CONNECTOR**

